

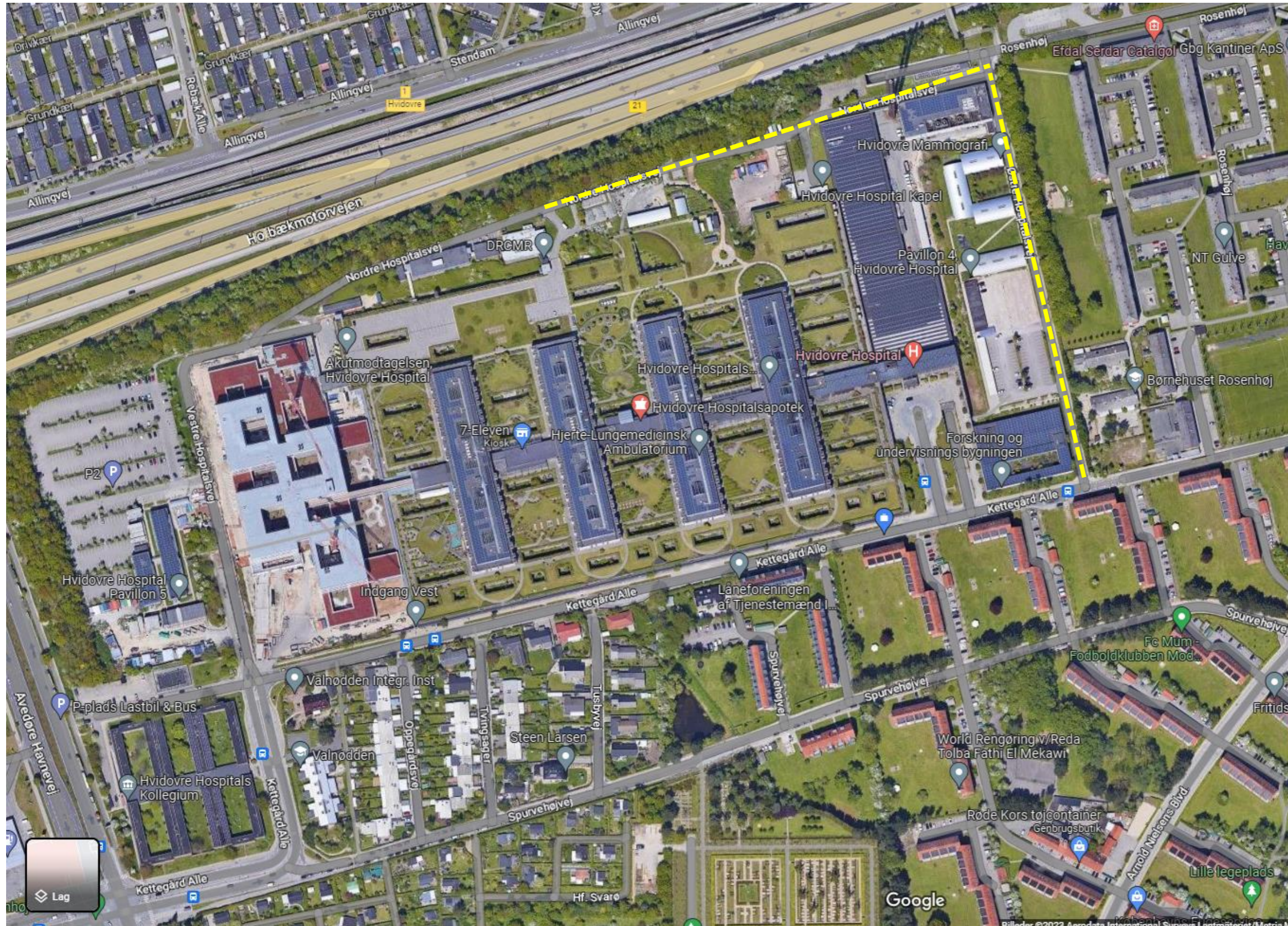
NOTE: Access to DRCMR is via Østre Hospitalsvej through the “back entrance”. Turn left on Nordre Hospitalsvej, pass the double chimney, go up the hill and find no. 13 (no. 19a) if you are going to Pav. 7.



DRCMR, Hvidovre Hospital, Nordre Hospitalsvej 13 + 19a, 1st.



NOTE: Access to DRCMR is via Østre Hospitalsvej through the “back entrance”. Turn left on Nordre Hospitalsvej, pass the double chimney, go up the hill and find no. 13 (no. 19a) if you are going to Pav. 7.



DRCMR, Hvidovre Hospital, Nordre Hospitalsvej 13 + 19a, 1st.